

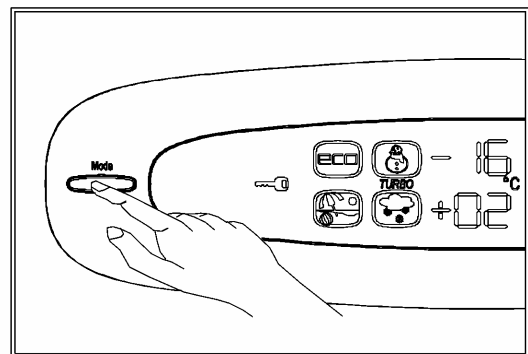
<b>VESTEL</b> <b>WHITE GOODS</b>	<b>NO-FROST</b>	<b>CUSTOMER SUPPORT</b>
	<b>THE VARIOUS FUNCTIONS AND POSSIBILITIES</b>	

### SWITCHING ON THE APPLIANCE :

Once the appliance has been connected to the network, If compartments are not cold enough freezer number segment shows “LF” and refrigerator number segment shows “LC”. Freezer and Refrigerator bar graphic is off. After compartments get to normal temperature; Freezer number segment shows -16 °C (4 bar is on the graphic), Refrigerator number segment shows +2 °C (5 bar is on the graphic)

### MODE BUTTON

- Press once to “mode button”
- The first pushing will make Economy symbol activate
- With each pressing on this button, in rows super freeze symbol, holiday symbol, super cool symbol will light. 5. push of MODE button will be empty and no symbol light.
- When convenient symbol starts to light, symbol will blink 5 times and buzzer will sound beep-beep so mode will be set if user doesn't push any button within 2 sec.



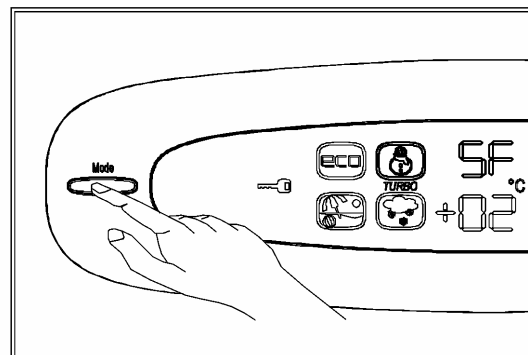
### SUPER FREEZING MODE

#### When will apply;

- To freeze lots of food that cannot fit into “Fast Freezing Shelf”.
- To freeze prepared foods
- To freeze faster
- To conceal fresh foods and vegetables

#### How to use;

- Press mode button till super freezing symbol will light
- If the user doesn't push any button for 2 sec., Symbol will blink 5 times and buzzer will sound beep-beep
- Freezer temperature segment will show “SF” during this mode
- Freezer bar graphic lights will be OFF
- Holiday and Economy modes will not work till super freezing mode finishes.
- Super cooling, refrigerator temp. adjusting will be on
- Freezer temp. adjusting can be done but will not be active till super freezing finishes.
- Mode will be cancelled if selected super freezing mode symbol again.



**Note:** “SUPER FREEZE” will be cancelled automatically after 24 hour or when freezer Sensor <-32 °C

<b>VESTEL</b> <b>WHITE GOODS</b>	<b>NO-FROST</b>	<b>CUSTOMER SUPPORT</b>
	<b>THE VARIOUS FUNCTIONS AND POSSIBILITIES</b>	

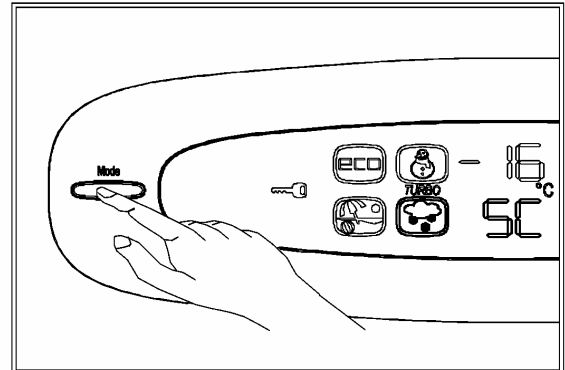
### **SUPER COOLING MODE**

**When will apply;**

- To cool the prepared foods.
- To cool and conceal a lots of food in refrigerator compartment.
- To cool the drinking more quickly

**How to use ;**

- Press mode button till super cooling symbol will light.
- If user doesn't push any button for 2 sec.mode will be set. Symbol will blink 5 times and buzzer will sound beep-beep.
- Refrigerator temperature segment will show "SC" during this mode
- Refrigerator bar graphic will be OFF
- Holiday and Economy modes will not work till super cooling mode finishes
- Super freezing, Freezer temp. adjusting will be on
- Refrigerator temp. adjusting can be done but will not be active till super cooling finishes.
- Mode will be cancelled if selected super cooling mode symbol again



**Note:** "SUPER COOLING" will be cancelled automatically after 12 hour or when refrigerator sensor < -4 °C

### **TURBO MODE**

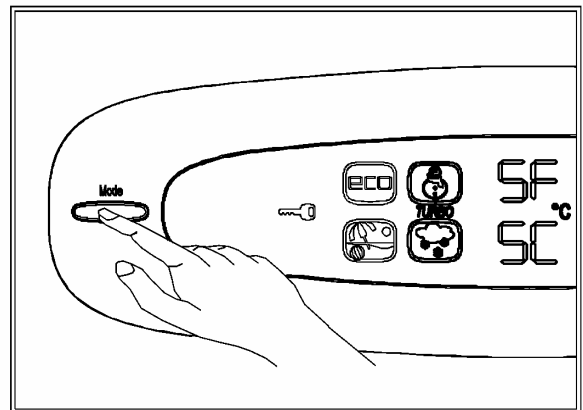
Turbo mode is not a mode that is selected individually

**When will apply;**

- Turbo symbol will light when both Super cooling and super freezing symbol is selected

**How to use;**

- Press mode button till "Super Freezing" symbol lights
- If user doesn't push any button for 2 sec.mode will be set. Symbol will blink 5 times and buzzer will sound beep-beep.
- Please repeat the same operation to set "Super Cooling"
- Then You will see "Turbo" between "Super Freezing" and "Super Cooling"
- Bars will be OFF and number segments will show "SF" and "SC".
- Holiday and economy mode will not work while turbo symbol is lighting
- Manual temp adjusting can be done , but will not active till super cooling and super freezing finishes



Turbo symbol will be OFF as soon as one of the modes (super freezing or super cooling) is cancelled manually or automatically.

<b>VESTEL</b> <b>WHITE GOODS</b>	<b>NO-FROST</b>	<b>CUSTOMER SUPPORT</b>
	<b>THE VARIOUS FUNCTIONS AND POSSIBILITIES</b>	

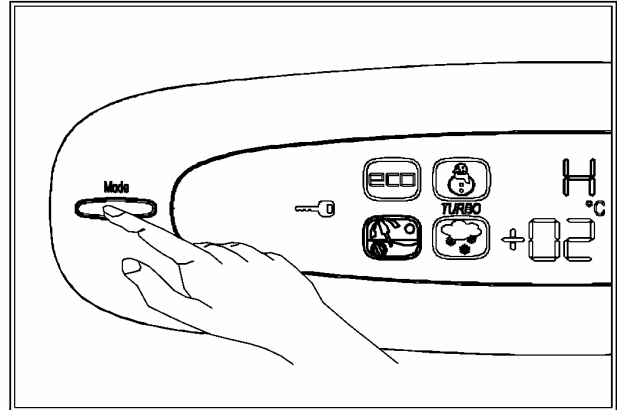
### HOLIDAY MODE

**When will apply;**

If you go to holiday and use only freezer compartment

**How to use;**

- Press mode button till holiday symbol lights
- If user doesn't push any button for 2 sec. mode will be set. Symbol will blink 5 times and buzzer will sound beep-beep.
- Freezer compartment will go on to work with the set value defined on the control circuit.
- Freezer number segment will show "H" during this mode
- Refrigerator compartment will be OFF. Refrigerator number segment and bar will be off.
- Mode will be cancelled if selected holiday symbol again.
- Appliance will go on to work with previous manually adjusted values. If no temperature values have been adjusted manually, it will go on with initial values ( F. comp:-16 °C, R.comp:+2 °C )



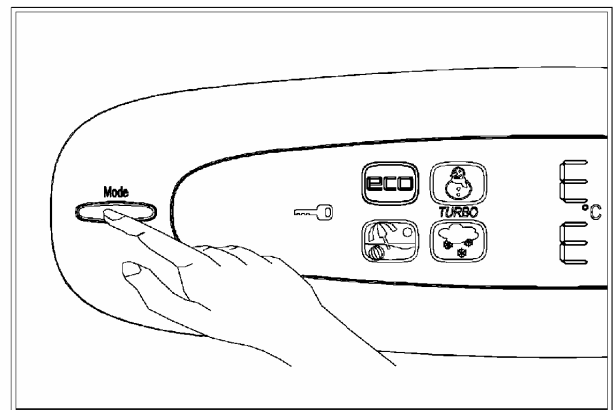
### ECONOMY MODE

**When will apply;**

- If you want to use at a set value is defined on the control circuit
- Both compartments will work in the normal regulation with the set values

**How to use;**

- Press mode button till economy symbol lights
  - If not push any button for 2 sec., mode will be set. Symbol will blink 5 times and buzzer will sound beep-beep.
  - During mode economy symbol will light, freezer/refrigerator temp. segments will show "E". Bars will be off.
  - The other modes will not work till economy mode finishes.
- Mode can be cancelled by selecting symbol again.



<b>VESTEL</b> <b>WHITE GOODS</b>	<b>NO-FROST</b>	<b>CUSTOMER  SUPPORT</b>
	<b>THE VARIOUS FUNCTIONS AND POSSIBILITIES</b>	

**CHILD LOCK FUNCTION**

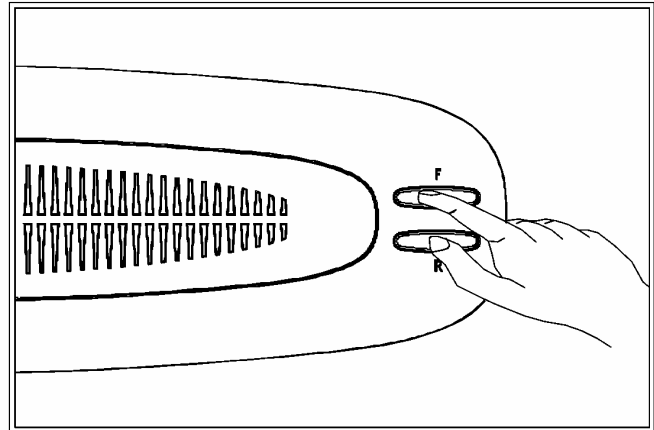
This refrigerator is equipped with a lock system for protection against children’s misusing.

**Setting The Child Lock**

•Press the "F" and "R" buttons continuously for 5 sec at the same time. Lock symbol will light

**Canceling The Child Lock**

•Press the "F " and " R" buttons continuously for 5 sec at the same time. Lock symbol will cancel.



**Note :** When there is a power failure, the “Child Lock” will cancel automatically.

**NO LIGHT MODE**

•If you want to disable lamps for both of compartments, you can choose this mode. Lamps will not light till mode is cancelled.

**Setting This Mode;**

•Push both refrigerator and freezer button, at the same time open and close freezer door 3 times.

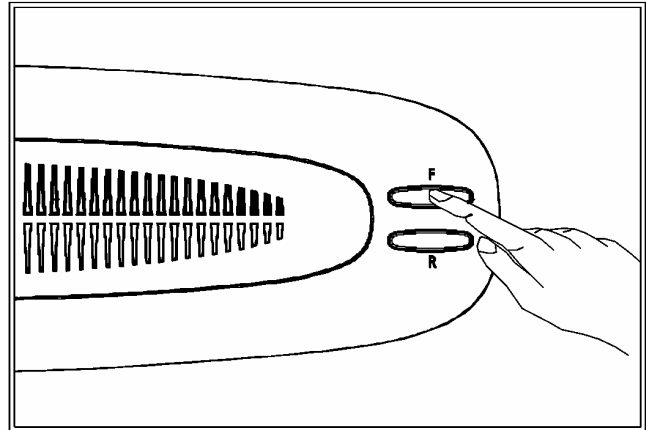
**Canceling This Mode;**

•Function can be cancelled by the same way or after 24 hours appliance will directly cancel it.

<b>VESTEL</b> <b>WHITE GOODS</b>	<b>NO-FROST</b>	<b>CUSTOMER SUPPORT</b>
	<b>THE VARIOUS FUNCTIONS AND POSSIBILITIES</b>	

**FREEZER COMPARTMENT TEMPERATURE ADJUSTMENT**

- At first number segment will show -16 °C.
- Press once “ F “ button
- The first pushing will make flashing on the freezer bar graphic display , if press “F” button within 2 sec. Number segment will show -18 °C
- Each step of temperature increase will make 4 bars on
- With each pushing on this button , the display will change to one colder step (-16 °C,-18 °C, -20 °C, -22 °C, -24 °C) Number segment and bar will blink 5 times and sound beep-beep



- When number segment is -24 °C. , If you push freezer button, the number segment will go on from -16 °C.
- If appliance was set to holiday, super freeze, super cool or economy mode before temp. adjusting ,appliance will go on to work in previous mode. When previous mode is cancelled /finished manually or automatically appliance will start to work in adjusted values

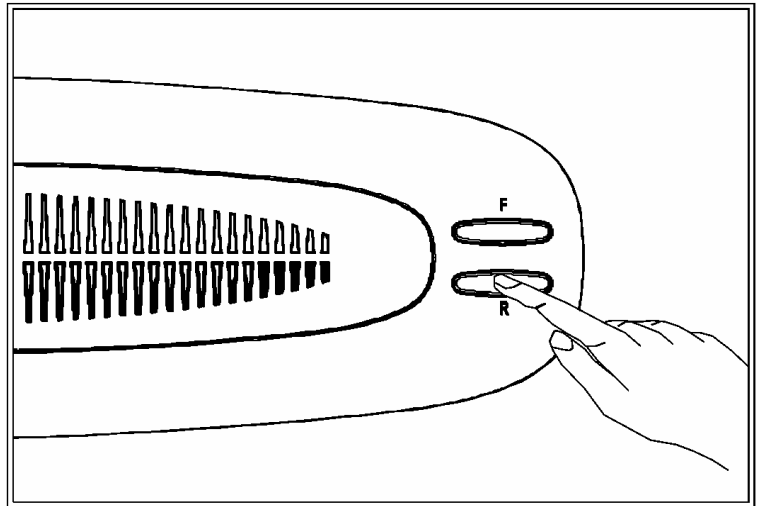
**Note :** If Ambient sensor is > 38 °C then user will not be able to adjust freezer Compartment ‘s temp. to -22 °C and -24 °C. Then only -16 °C, -18 °C, -20 °C will be available.

**Recommended Settings For Freezer Compartment Temperature**

Temperature Bar	When will settle	Freezer Cabinet Inside Temperature
4 bar	For little amount stoking	-16 °C
8 or 12 bar	Normal stoking	-18 °C or -20 °C
16 or 20 bar	For lots of food stocking	-22 °C or -24 °C

**REFRIGERATOR COMPARTMENT TEMPERATURE ADJUSTMENT**

- Press once “R” button
- At first number segment will show +2 °C.
- The first pushing will make flashing on the refrigerator bar graphic display , if press “R” button within 2 sec. Number segment will show +4 °C.
- Each step of temperature increase will make 4 bars on With each pushing on this button , the display will change to one warmer step (+2 °C,+4 °C, +6 °C, +8 °C) Number segment and bar will blink 5 times and sound beep beep.
- Each step of temperature decrease will make 5 bars on
- When number segment is +8 °C. , If you push refrigerator button, the number segment will go on from +2 °C.
- If appliance was set to holiday, super freeze, super cool or economy mode before temp. adjusting, appliance will go on to work in previous mode. When previous mode is cancelled /finished manually or automatically appliance will start to work in adjusted values.



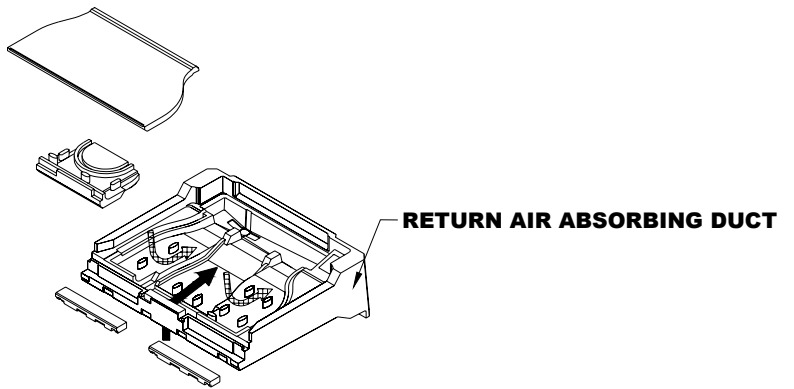
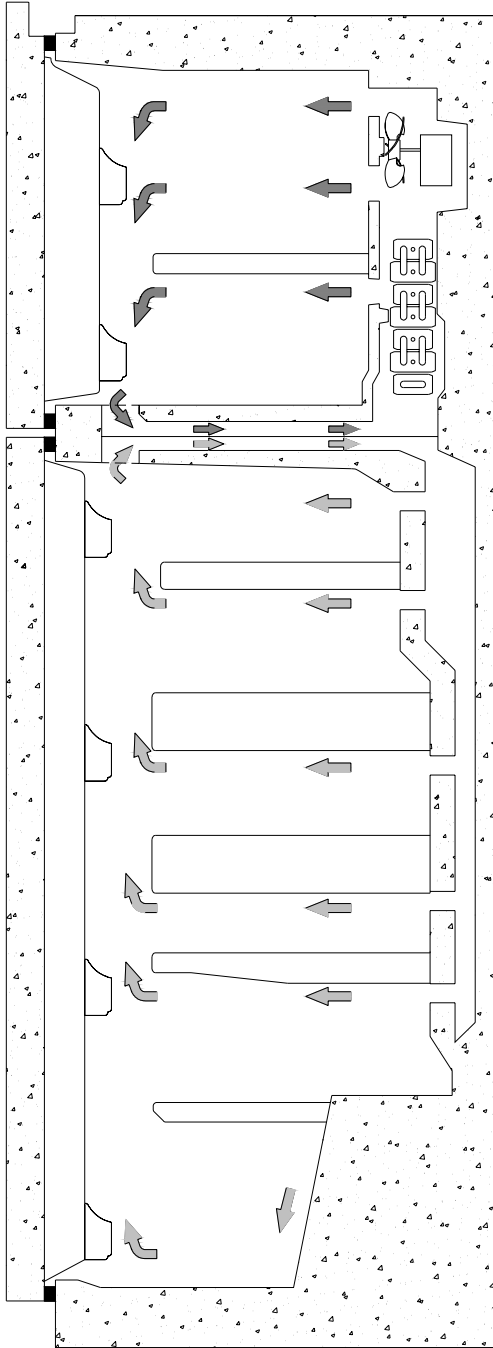
**Recommended Settings For Refrigerator Compartment Temperature**

Temperature Bar	When will settle	Freezer Cabinet Inside Temperature
5 bar	For lots of food stocking	+2 °C
10 or 15 bar	Normal stoking	+4 °C or +6 °C
20 bar	For little amount stoking	+8 °C

**WARNING ABOUT SETTINGS**

- Temperature settings will not change in case when there is a power failure(the electricity is off or the appliance is unplugged). “Child Lock” will be cancel.
- When you first switch on the appliance, for starting a suitable cooling, the appliance should work 24 hours continuously until it cools down to sufficient temperature. In this time do not open the door so often and do not place a lot of food inside the appliance.
- Do not make any settings, before finishing the previous settings.

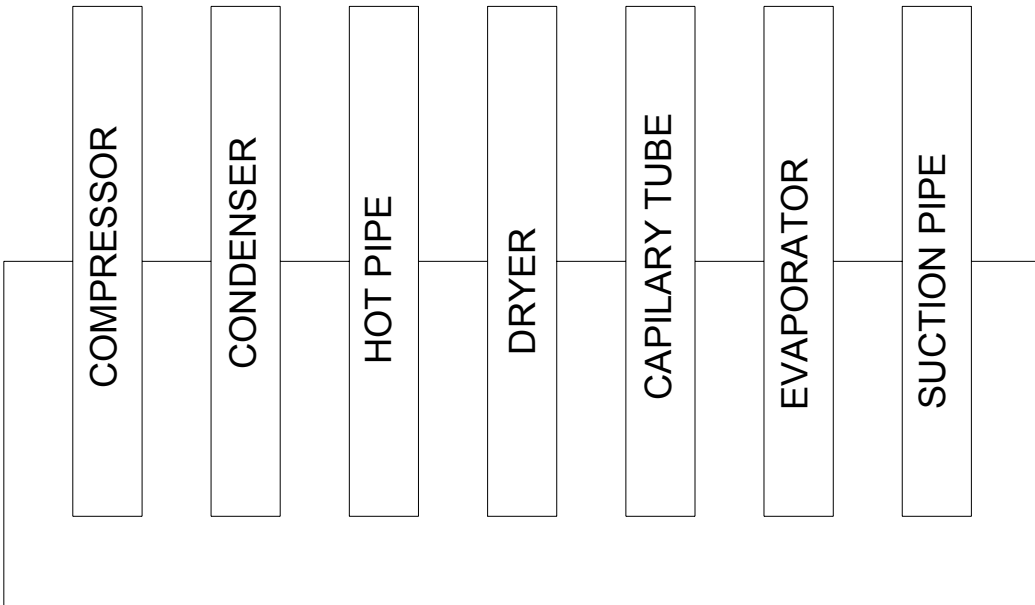
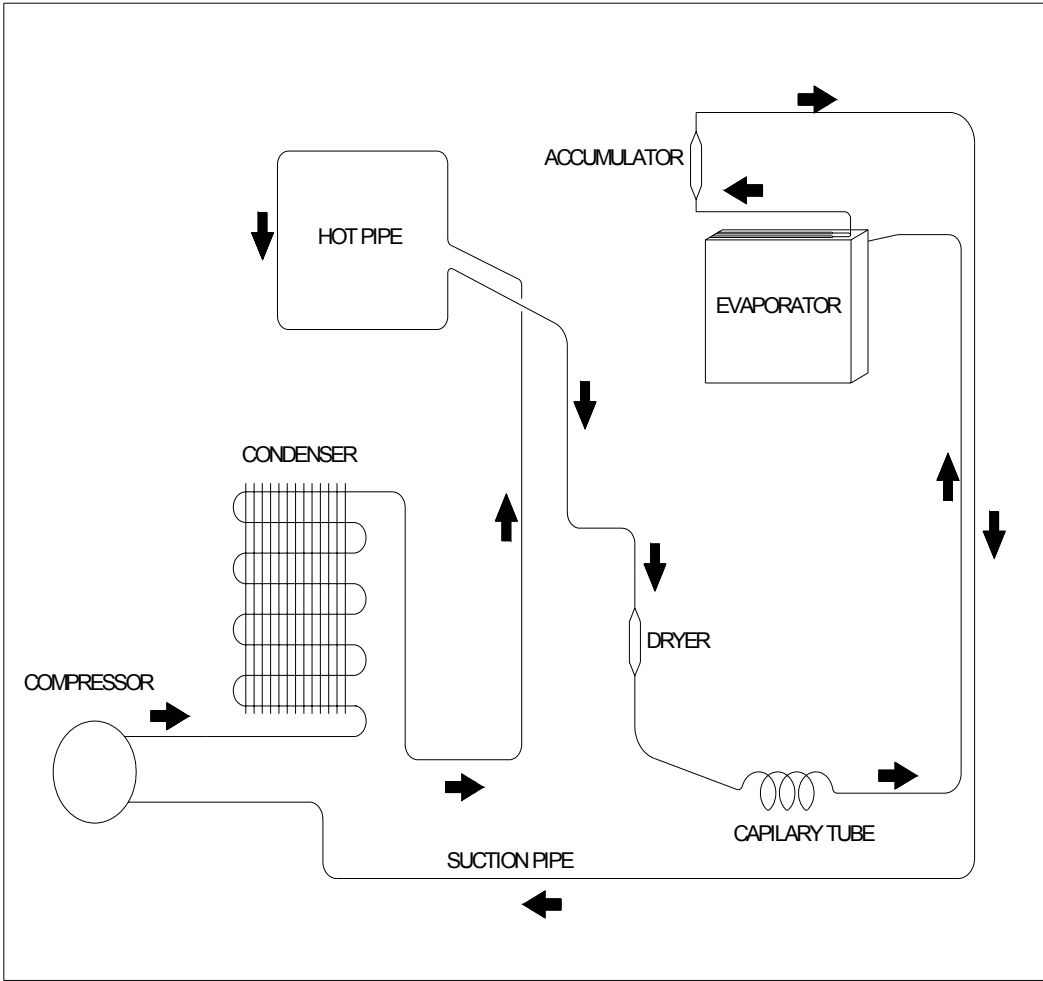
<b>VESTEL</b> WHITE GOODS	<b>NO-FROST</b>	<b>CUSTOMER SUPPORT</b>
	<b>AIR FLOW DIAGRAM</b>	




- ⇐ FREEZER SECTION RETURN AIR
- ➔ REFRIGERATOR SECTION RETURN AIR

**NOTE THAT: RETURN AIRS,  
WHICH COMES FROM FREEZER  
AND REFRIGERATOR SECTION  
DO NOT MIX EACH OTHER**

<b>VESTEL</b> WHITE GOODS	<b>NO-FROST</b>	<b>CUSTOMER SUPPORT</b>
	<b>REFRIGERANT CYCLE DIAGRAM</b>	



 <b>WHITE GOODS</b>	<b>NO-FROST</b>	<b>CUSTOMER SUPPORT</b>
	<b>SPECIAL PROGRAMS</b>	

**When you first start the appliance;**

If the freezer and defrost sensors are warmer than  $-5^{\circ}\text{C}$ , then the automatic test starts. The below listed components will be tested respectively with 5 second intervals. The appliance will start the normal running mode after 30 seconds.

- R&SU heater for 5 seconds
- Defrost heaters for 5 seconds (Fin evaporator resistance, defrost pipe resistance and insulation mullion heater)
- Evaporator fan motor for 5 seconds
- Condenser fan motor for 5 seconds
- Compressor for 5 seconds

After 5 seconds, the appliance will start to run.

**Display temperature :**

**FREEZER**

-16°C	4 led ✖ ✖ ✖ ✖
-18°C	8 led ✖ ✖ ✖ ✖ ✖ ✖ ✖ ✖
-20°C	12 led ✖ ✖ ✖ ✖ ✖ ✖ ✖ ✖ ✖ ✖ ✖ ✖
-22°C	16 led ✖ ✖ ✖ ✖ ✖ ✖ ✖ ✖ ✖ ✖ ✖ ✖ ✖ ✖ ✖ ✖
-24°C	20 led ✖

**REFRIGERATOR**

+2°C	5 led ✖ ✖ ✖ ✖ ✖
+4°C	10 led ✖ ✖ ✖ ✖ ✖ ✖ ✖ ✖ ✖ ✖
+6°C	15 led ✖ ✖ ✖ ✖ ✖ ✖ ✖ ✖ ✖ ✖ ✖ ✖ ✖ ✖ ✖
+8°C	20 led ✖

**Defrost Mode;**

Defrost mode will be activated after at least 18 hours of compressor run. Depending on the factors listed below, this period can be reduced to 8 hours minimum;

- Ice accumulation quantity,
- Number of door open-closed,
- How long the door left open,
- Variation of usage,
- Instantaneous rise of the refrigerator temperature,
- Instantaneous rise of the freezer temperature.

<b>VESTEL</b> <b>WHITE GOODS</b>	<b>NO-FROST</b>	<b>CUSTOMER SUPPORT</b>
	<b>SPECIAL PROGRAMS</b>	

### Defrosting time;

Under normal conditions, defrosting period ends when the defrost sensor measures 8°C. But if the defrosting period exceeds 37 minutes, then the defrosting mode completion temperature will be raised to 12°C.

### Delay of the compressor run;

Compressor will be started after 5 minutes of defrost mode.

### Delay of fan motor run;

Fan motor starts after 3 minutes of compressor run.

### Low Voltage Program;

In case of supply voltage lower than 170 V for more than 5 seconds, the low voltage program will stop the compressor, evaporator fan motor, condenser fan motor and also the super freezing supercooling functions. If this situation happens during the defrost mode, then the appliance will stop during defrosting.


When the supply voltage reaches a value greater than 180V, the appliance will start again from the defrost mode. If the appliance was not stopped during the defrost mode, then it will be stopped for 5 minutes more for compressor secure start-up and will be started from the last setted program.

### When the electricity is off;

- All the parameters and functions will be kept in the memory (except the child lock function)
- When the electricity is on, if the defrost sensor measures <5°C, then the compressor will be started after 5 minutes. If the defrost sensor measures >5°C, then the compressor will be started immediately.
- The appliance will be started with the last program setted.

### Other Features;

- **Door open alarm** : It will be activated if freezer or refrigerator door is open more than 2 minutes continuously.
- **R&SU Heater** : It will be activated if the ambient temperature is lower than 13 °C
- If ambient temperature is lower than 13 °C, condensing fan motor will be stop for energy saving.

 <b>WHITE GOODS</b>	<b>NO-FROST</b>	<b>CUSTOMER SUPPORT</b>
	<b>SPECIAL PROGRAMS</b>	

## SERVICE MODE:

To start-up the service mode, press the freezer button continuously while you open and close the freezer door for 3 times. The service mode will be started in 3 seconds. During this mode, you will hear 0.1 second long bip sound for every 5 seconds. All the symbols, except the child lock symbol, will be closed. If there is any fault, you will see the fault code on the panel, if not, the panel will be empty. If you are able to correct the fault, then the fault code will be disappeared from the panel.

You can choose the below functions with the mode button. While a function is activated, you will not see any fault code on the panel. If you do not push any other buttons for 2 seconds, the function you choose will be activated. You can choose 4 functions by pressing mode button;

- Press for once; **Start-up test program function;**

Economy symbol will be blinking. On the freezer temperature bar graphic;

- 4 bars blinking: R&SU heaters are on,
- 8 bars blinking: Defrost heaters are on( AI tube heater+ Insulation mullion heater+ Drain heater),
- 12 bars blinking: Evaporator fan motor is on,
- 16 bars blinking: Condenser fan motor is on,
- 20 bars blinking: Compressor is on.

After the start-up test program ends, the economy symbol will be off and the appliance will be turned to the service mode.

- Press 2 times; **Manual defrost start-up and cancel function;**

Holiday symbol will be blinking.

You can cancel this mode manually or automatically. For canceling manually, press the refrigerator button, the holiday symbol will be disappeared and the mode will be cancelled. If you do not cancel this mode for 30 minutes, service mode will be cancelled automatically.

If defrosting period is completed within 30 minutes then the appliance will start from the last setting values. If defrosting is not completed within 30 minutes, the appliance will run until defrosting is completed and the appliance will start from the last setting values.

- Press 3 times; **Function to open/close motor damper manually;**

Fast freezing symbol will be blinking.


If the damper is closed, then it will be opened, if it is opened then it will be closed after you chose this function. If you do not reset this mode, then the damper will turn to it's initial position after 5 minutes and the mode will switched to the service mode.

You can also cancel this function by pressing the refrigerator button. When the damper turned to its initial position, the fast freezing symbol will be disappeared and the mode will switched to the service mode.

- Press 4 times; **Function to test the refrigerator and freezer section temperatures;**

Fast cooling symbol will be blinking.

F letter will be appeared on the number segment of freezer section and the freezer sensor temperature will be appeared on the number segment of refrigerator section.

 <b>WHITE GOODS</b>	<b>NO-FROST</b>	<b>CUSTOMER SUPPORT</b>
	<b>CONTROL FUNCTIONS</b>	

**Control functions:** This function has been created to prevent or to inform the user against to abnormal happenings.

**CO:01, Freezer sensor > -10 °C (Like -9°C, -10°C)**

It means that freezer compartment is not cold enough. Some reasons for this failure are as written below;

- When you first switch on the appliance,
- When too much fresh food are placed in the freezer compartment,
- When the inlet cold air duct is covered by foods,
- When the Freezer door continuously open for long time,
- When the electricity is off for a long time of period.

**CO:02, Refrigerator sensor > 15 °C (Like 16°C, 17°C)**

It means that although the temperature in the freezer section is colder than -10°C, the refrigerator compartment is not cold enough. Some of the reasons for this failure are as written below;

- When the duct damper couldn't open,
- When too much fresh food are placed in the refrigerator compartment,
- When the refrigerator door continuously open for long time


**CO:03, Refrigerator sensor < -5 °C (Like -6°C, -7°C)**

It means that refrigerator compartment is too cold.(< -5 °C ). Some of the reasons for this failure are as written below;

- When the duct damper couldn't close
- When the return air duct inlet is covered by foods
- When the Refrigerator setting temperature is high.

**CO:04, Freezer Sensor > -10 °C and Ref. Sensor > 15 °C**

You will see this failure when you first start the appliance. It will be disappeared after the compartments reach to the temperatures below to the above mentioned temperatures.

	<b>NO-FROST</b>	<b>CUSTOMER SUPPORT</b>
	<b>FAULT CODES</b>	

### Sensor Faults; FX:

Freezer sensor:1

Refrigerator Sensor:2

Defrost Sensor:3

Ambient Sensor:4

- FE:01,Freezer sensor is defected,
- FE:02,Refrigerator sensor is defected,
- FE:03, Defrost sensor is defected,
- FE:04, Ambient sensor is defected,
- E: only 1 sensor is defected, (Ex: FE:01 means sensor1 is defected),
- F: 2 sensors are defected, (Ex: FF:12 means sensors 1&2 are defected),
- H: 3 sensors are defected, (Ex: FH:04 means sensor 4 is ok. The others are defected),
- U: 4 sensors are defected, (FU:00, All sensors are defected).

**Note that:**2 digits following E and F letters indicate the defected sensor numbers, 2 digits following H and U letters indicate the sensor numbers without any fault.

### **FO:05 Insufficient cooling in the refrigerator section (No cooling for 10 minutes)**

Some reasons of this fault are;

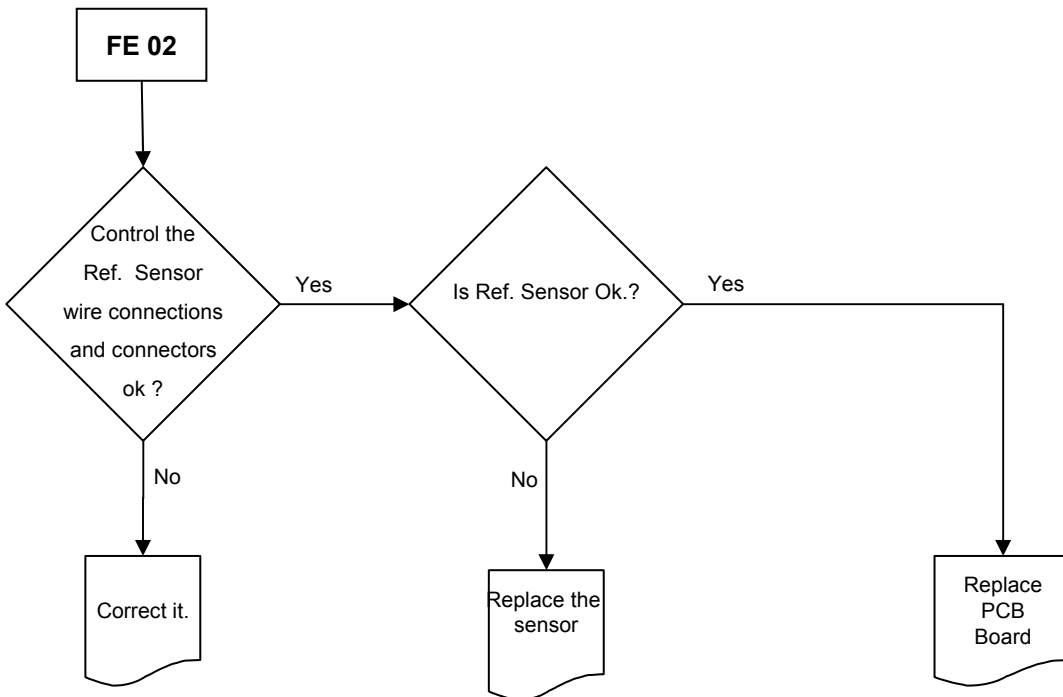
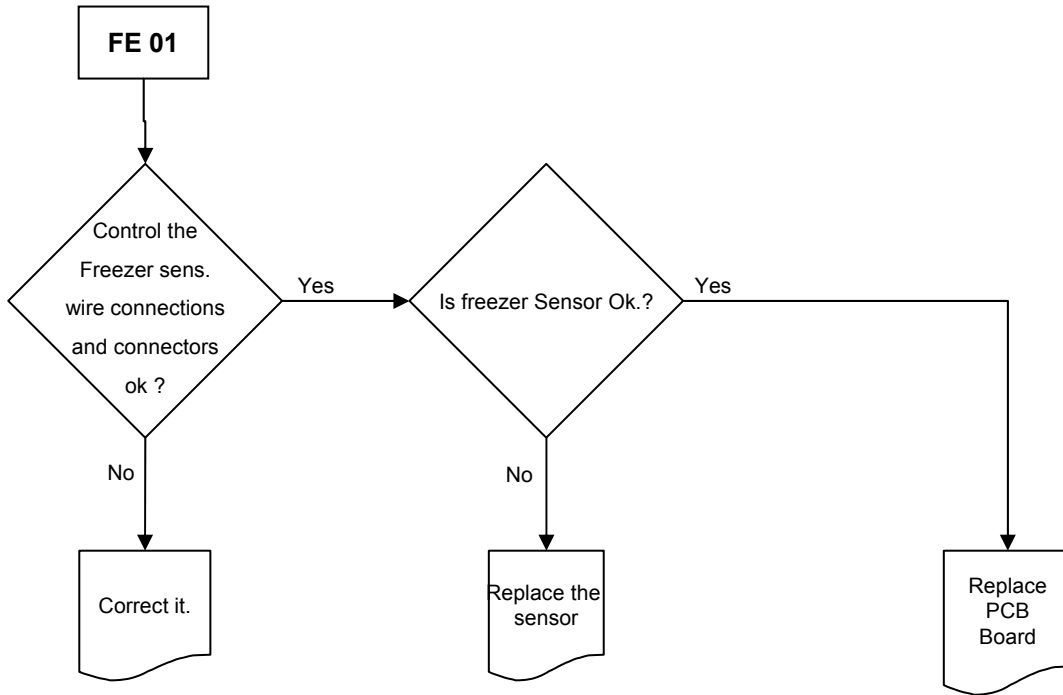
- connector defect
- wire contact is not good
- Refrigerant leakage
- Compressor defect
- Relay group defect

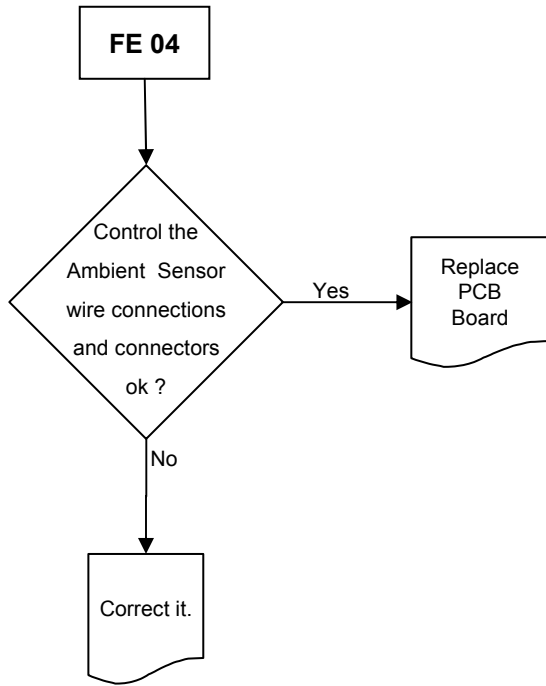
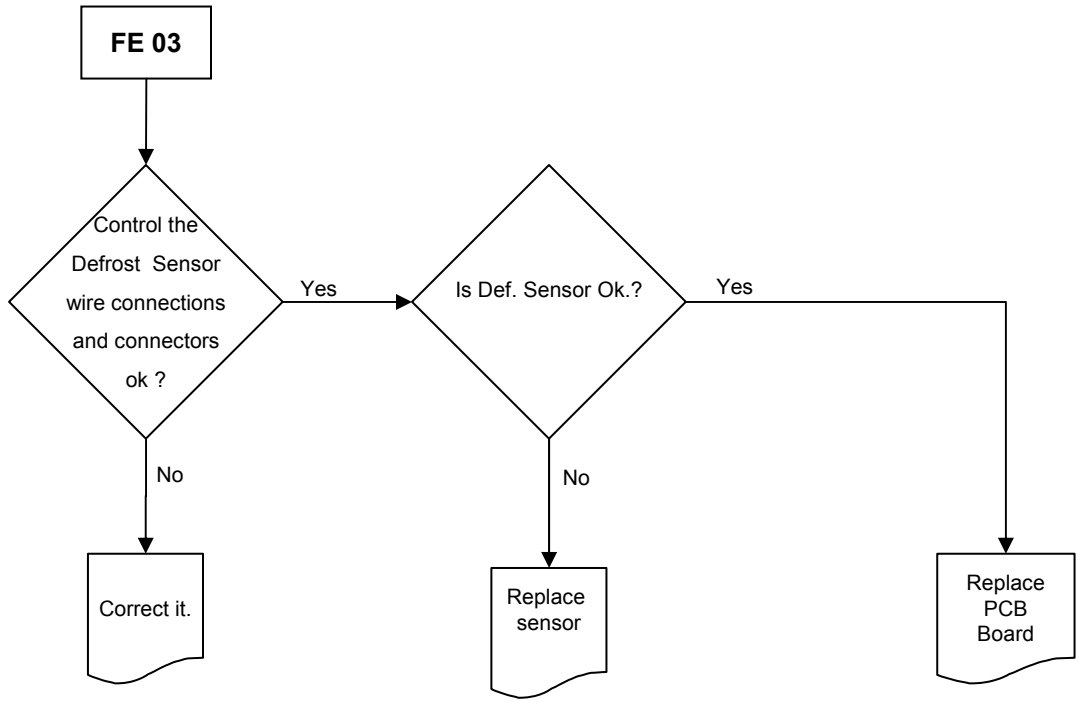
### **FO:06 Defrost Fault**

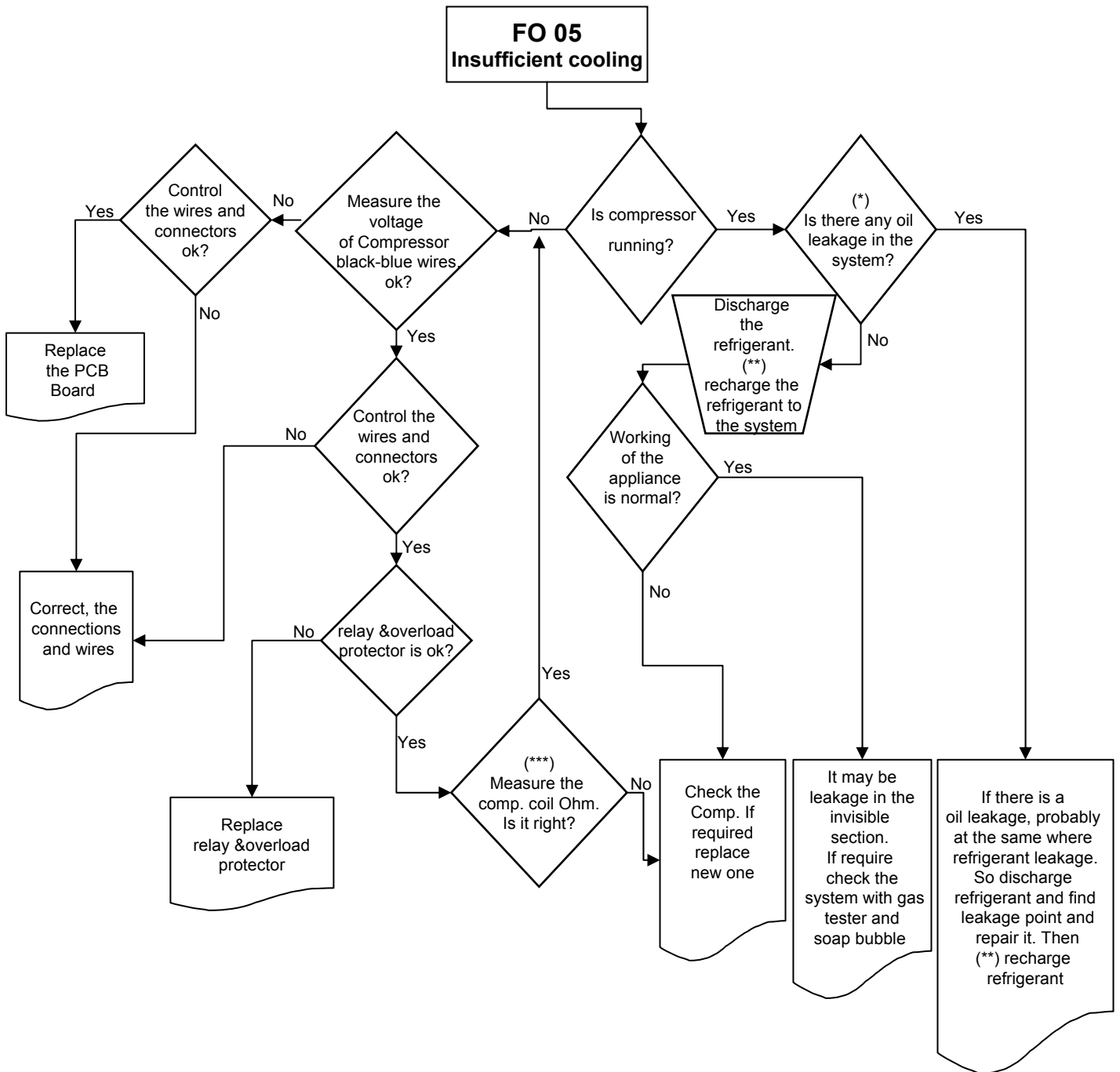
During the defrosting period, if the defrost sensor still measures below 0°C after 90 minutes of defrosting, then this fault code will appear on the display panel.

Some reasons of this fault are;


- connector defect
- wire contact is not good
- Defrost Heater defects,
- Too much ice accumulation on the evaporator.







(\*) Check all of the visible pipes and welding points against oil leakage  
 (\*\*) Before recharging the refrigerant to the system; Dryer must be replaced and at least 30 minutes vacuum must be done  
 (\*\*\*) Comp. Main coil and auxiliary coil are 10 Ω and 22 Ω respectively (At 25 °C ambient temp.)

 <b>WHITE GOODS</b>	<b>NO-FROST</b>	<b>CUSTOMER SUPPORT</b>
	<b>TROUBLE-SHOOTING CHART</b>	

### USER AND SERVICE MODE FAULT CODES

SENSOR	TEMPERATURE	USER MODE	SERVICE MODE
(1) Freezer	>+50 °C or <-50 °C sensor open or short circuit	On the number segment of freezer compartment, SR letters will be seen. Number segment for refrigerator segment will be empty until the problem will be solved.	FE 01
(2) Refrigerator	>+50 °C or <-50 °C sensor open or short circuit		FE 02
(3) Defrost	<100 Ω or <-50 °C short circuit		FE 03
(4) Ambient			FE 04
Sensors 1 and 2 are defected			FF 12
Sensors 1 and 3 are defected			FF 13
Sensors 1 and 4 are defected			FF 14
Sensors 2 and 3 are defected			FF 23
Sensors 2 and 4 are defected			FF 24
Sensors 3 and 4 are defected			FF 34
Sensors 2 and 3 and 4 are defected			FH 01
Sensors 1 and 3 and 4 are defected			FH 02
Sensors 1 and 2 and 4 are defected			FH 03
Sensors 1 and 2 and 3 are defected			FH 04
Sensors 1 and 2 and 3 and 4 are defected			FU 00

### COMPONENT FAULT CODES

FAULT TYPE	DETAILS	USER MODE	SERVICE MODE
Compressor fault	Defrost sensor temperature > -10 °C	On the number segment of freezer compartment, SR letters will be blinking. Number segment for refrigerator segment will be empty until the problem will be solved.	FO 05
Defrost heater fault	Defrost sensor temperature < 0 °C		FO 06

### LOW VOLTAGE FAULT

FAULT TYPE	DETAILS	USER MODE	SERVICE MODE
Low voltage	Line voltage <170V	LO letters on the number segment of freezer compartment and PO letters on the number segment of refrigerator compartment will be blinking.	LO PO

<b>VESTEL</b> <b>WHITE GOODS</b>	<b>NO-FROST</b>	<b>CUSTOMER SUPPORT</b>
	<b>TROUBLE-SHOOTING CHART</b>	

### COOLING FAULTS

<b>FAULT TYPE</b>	<b>DETAILS</b>	<b>USER MODE</b>	<b>SERVICE MODE</b>
Freezer sensor > -10 °C	Freezer section is not cold enough	On the number segment of freezer compartment, LF letters will be blinking	CO 01 letters will be seen on the display
Refrigerator sensor > 15 °C	Refrigerator section is not cold enough	On the number segment of refrigerator compartment, LC letters will be blinking	CO 02 letters will be seen on the display
Refrigerator sensor < -5 °C ise	Refrigerator section is too cold	On the number segment of refrigerator compartment, HC letters will be blinking	CO 03 letters will be seen on the display
Freezer sensor > -10 °C Refrigerator sensor > 15 °C	Both freezer and refrigerator sections are not cold enough	LF letters on the number segment of freezer compartment and LC letters on the number segment of refrigerator compartment will be blinking	CO 04 letters will be seen on the display

<b>VESTEL</b> <b>WHITE GOODS</b>	<b>NO-FROST</b>	<b>CUSTOMER  SUPPORT</b>
	<b>CHANGING THE DOORWAY DIRECTION</b>	

**1-** Unscrew the screw fixing the top hinge cover (Fig-1.1) and remove it. Disconnect the display connector. (Fig-1.2)



Figure-1.1



Figure-1.2

**2-** Unscrew the two screws fixing the top hinge and remove it. (Fig-2)



Figure-2

**3-** Remove the freezer door. (Fig-3)



Figure-3

**4-** Unscrew the two screws which are fixing the middle hinge. (Fig-4)



Figure-4

**5-** Remove the refrigerator door. (Fig-5)



Figure-5

<b>VESTEL</b> WHITE GOODS	<b>NO-FROST</b>	<b>CUSTOMER          SUPPORT</b>
	<b>CHANGING THE DOORWAY DIRECTION</b>	

**6-** Remove the kick plate by pulling forward. (Fig-6)



Figure-6

**7-** Unscrew the bottom hinge fixing screws and remove it. (Fig-7)



Figure-7

**8-** Unscrew the stationary foot of bottom hinge. (Fig-8)

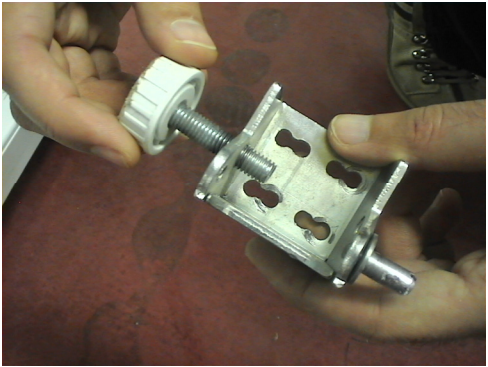


Figure-8

**9-** Unscrew the stationary foot support fixing screws and remove it. (Fig-9) Then screw the right side of refrigerator



Figure-9

**10-** Then screw the left bottom hinge to the left side of refrigerator and screw the stationary foot. (Fig-10)

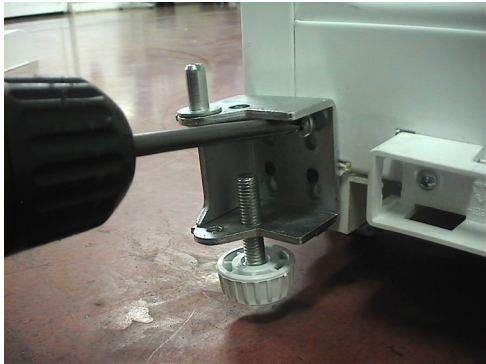


Figure-10

<b>VESTEL</b> WHITE GOODS	<b>NO-FROST</b>	<b>CUSTOMER          SUPPORT</b>
	<b>CHANGING THE DOORWAY DIRECTION</b>	

**11-** Remove the kick plate cap-left (Fig-11.1) and assemble the kick plate cap-right. (Fig-11.2) (You can find the the kick plate cap-right in the user manuel bag)

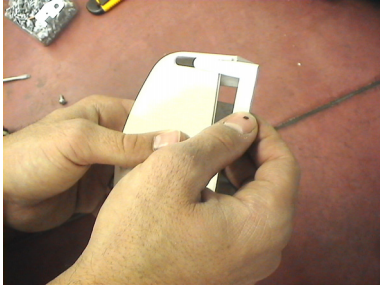


Figure-11.1

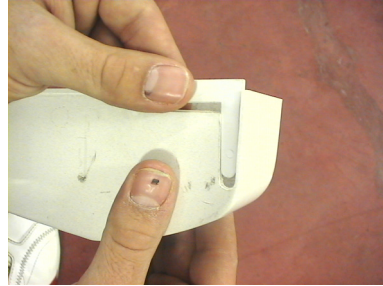


Figure-11.2

**12-** Assemble the kick plate. (Fig-12)



Figure-12

**13-** Remove the middle hinge cover on the left. (Fig-13)

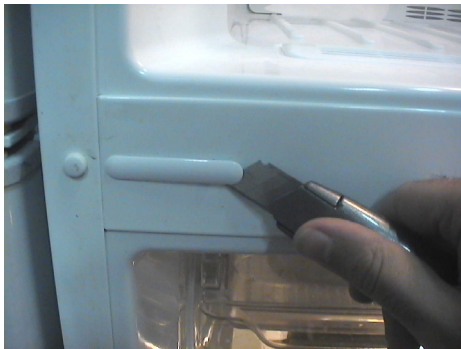


Figure-13

**14-** Insert the middle hinge cover to the right side. (Fig-14)



Figure-14

**15-** Replace the top bushing (Fig-15.1) and top bushing cap. (Fig-15.2) (You can find the new bushing cap in the user manuel bag)



Figure-15.1



Figure-15.2

<b>VESTEL</b> <b>WHITE GOODS</b>	<b>NO-FROST</b>	<b>CUSTOMER  SUPPORT</b>
	<b>CHANGING THE DOORWAY DIRECTION</b>	

**16-** Remove the bottom bushing, bottom stopper and bottom stopper reinforcement-right (Fig-16.1) and then assemble the bottom bushing, bottom stopper and bottom stopper reinforcement-left to the left side. (Fid-16.2)  
(You can find the bottom stopper reinforcement-left in the user manual bag)



Figure-16.1

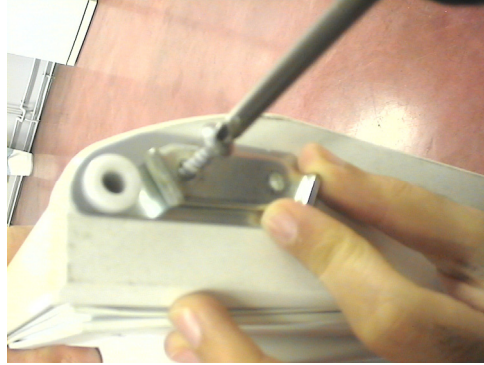


Figure-16.2

**17-** Remove the connector cover on the upper left of freezer door and insert it to upper right side. (Fig-17.1) Remove the right door catcher (Fig-17.2) and assemble the left door catcher to the left. (Fig-17.3) (You can find the left door catcher in the user manual bag)



Figure-17.1



Figure-17.2



Figure-17.3

**18-** Assemble the refrigerator door. Turn the middle hinge by 180°. Fix the middle hinge by tightening the screws. (Fig-18)



Figure-18

**19-** Assemble the freezer door. (Fig-19)



Figure-19

<b>VESTEL</b> WHITE GOODS	<b>NO-FROST</b>	<b>CUSTOMER SUPPORT</b>
	<b>CHANGING THE DOORWAY DIRECTION</b>	

**20.1-** Unscrew the screw fixing the top hinge pin. (Fig20.1) Rotate the pin by 180° then fix it to left side of the top hinge by screwing it.  
**Production Before Date 02.01.2008 and Production After Date 02.01.2008**

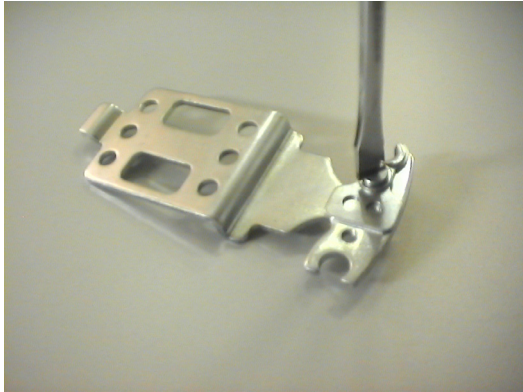


Figure-20.1

**20.2-** Left top hinge by screwing to the left side. (Fig-20.2) You can find the left hinge in the crisper. **Production Between Date 02.01.2008 and 18.04.2008**

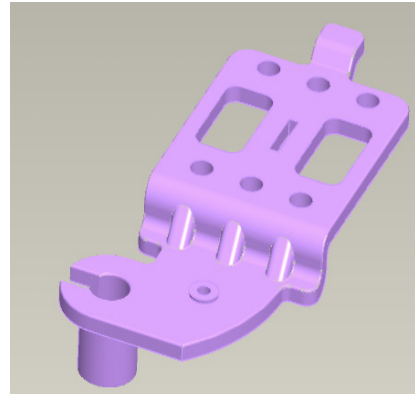


Figure-20.2

**Note :**

<p>Use holes fixing the hinge for the left side swing.</p>	<p>Use holes fixing the hinge for the right side swing.</p>

**21 -** Connect the display connector. (Fig-21)



Figure-21

**22-** Screw the hinge cover. (Fig-22)



Figure-22

<b>VESTEL</b> WHITE GOODS	<b>NO-FROST</b>	<b>CUSTOMER          SUPPORT</b>
	<b>FREEZER COMPARTMENT</b>	

### Replacement of Freezer Door Display Connector

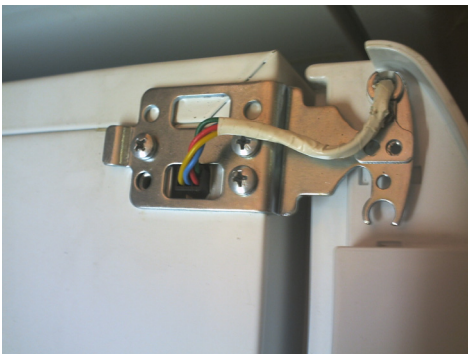
Unscrew the top hinge cover screw and remove it.



Disconnect the display connector.



Unscrew the three screws which are fixing the top hinge and remove it.



Remove the tape on the upper left side of the cabinet.



Remove the connector cover on the upper left of freezer door and insert it to upper right side.



Assemble the top hinge to the left side (Page 22) and connect the display connector.



Screw the hinge cover.



<b>VESTEL</b> WHITE GOODS	<b>NO-FROST</b>	<b>CUSTOMER          SUPPORT</b>
	<b>FREEZER COMPARTMENT</b>	

### Replacement of Freezer Lamp

1) Insert a screwdriver into a groove and pull the lamp cover.

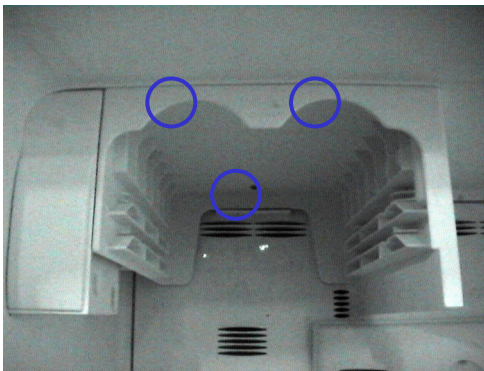


2) Loosen the lamp and replace it.

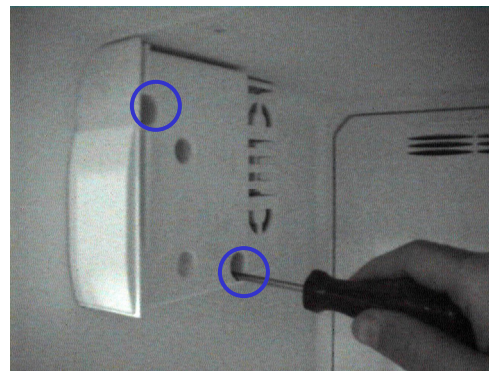


### Replacement of Freezer Sensor

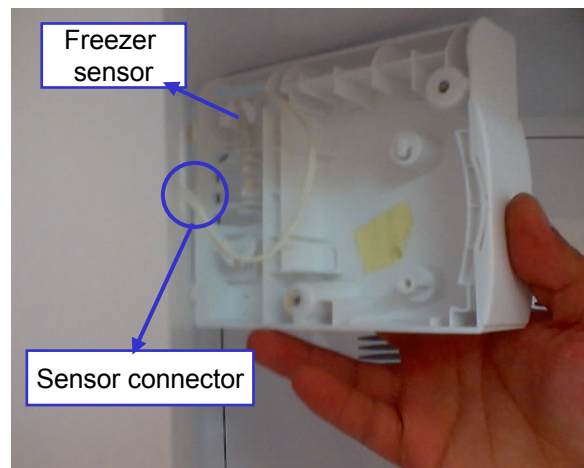
1) Remove the ice matic group. Then unscrew the three screws which are fixing the ice matic holder and remove it.  
**(KA 40\*14 WN 1411(INOX) EJOT)**



2) Unscrew the two screws which are fixing the thermostat cover and remove it by pulling forward.  
**(PLS KA 40\*13(INOX-S.UÇ) SUS 430)**



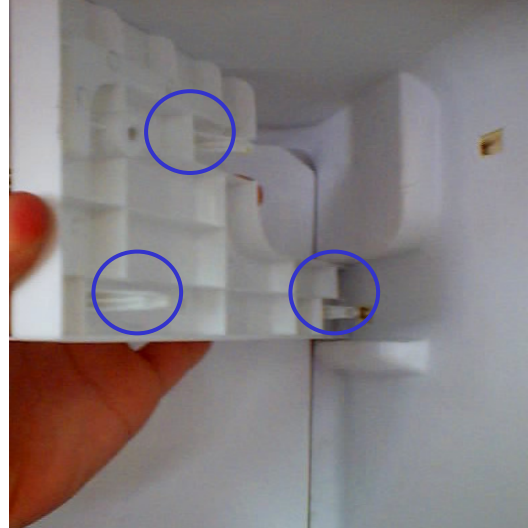
3) Disconnect the sensor connector and take out the Freezer sensor.



<b>VESTEL</b> WHITE GOODS	<b>NO-FROST</b>	<b>CUSTOMER          SUPPORT</b>
	<b>FREEZER COMPARTMENT</b>	

**Dismantle of Freezer Partition**

- 1) Unscrew the screw fixing the freezer partition.  
 (KA 40\*14 WN 1411(INOX) EJOT)      2) Remove the freezer partition by pulling forward.

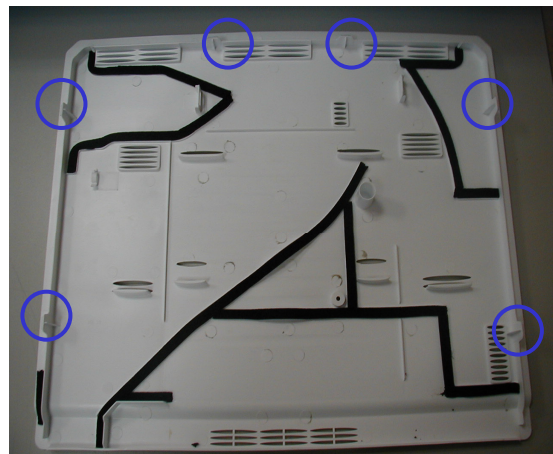


**Replacement of Freezer Multiflow Cover**

- 1) Unscrew the screw fixing the freezer lamp cover and remove it.      2) Unscrew the screw fixing the multiflow cover and disconnect the lamp socket and remove it.

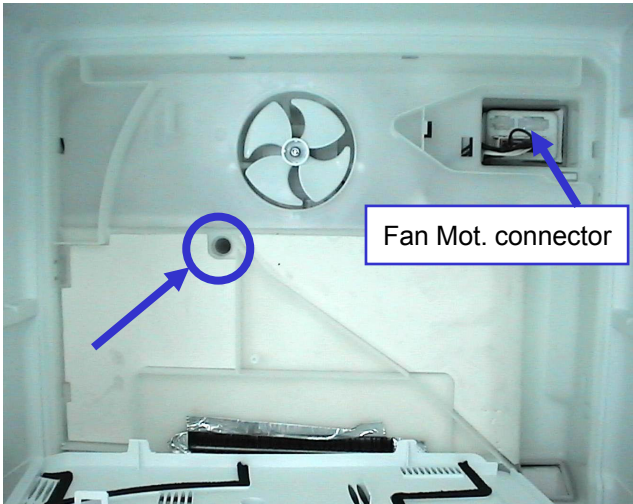


There are 6 catchers and isolation sponges on the back side of the cover. During dismantling of the cover, be careful not to damage them.



<b>VESTEL</b> WHITE GOODS	<b>NO-FROST</b>	<b>CUSTOMER SUPPORT</b>
	<b>FREEZER COMPARTMENT</b>	

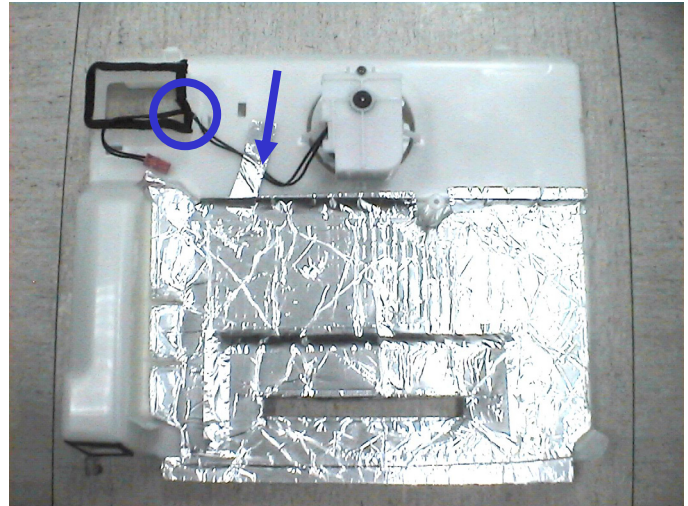
### Replacement of Freezer MultiFlow Assy



Unscrew the screw fixing the freezer multiflow assembly. (KA 40\*14 WN 1411(INOX) EJOT)

Disconnect the fan motor connector. (pink connector)

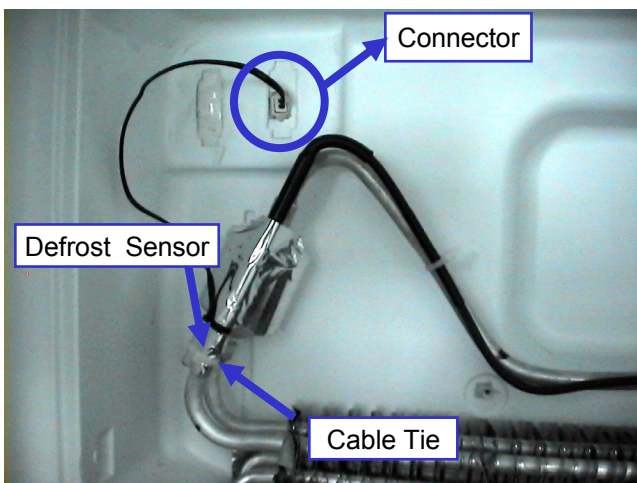
Remove the multiflow assy by pulling forward.



Dismantle the fan motor cover by removing the screw and detach the fan blower spring, and then take out the fan motor.

**Note That :** Fan motor wires must be pass under the sponge and aluminium tape as shown in picture.

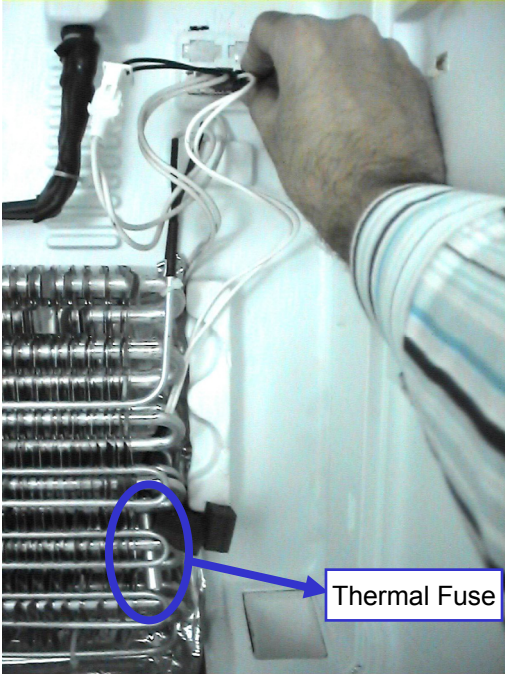
### Replacement of Defrost Sensor



Remove the defrost sensor connector. Cut the cable tie. You can take out the defrost sensor by removing the aluminium tape on it

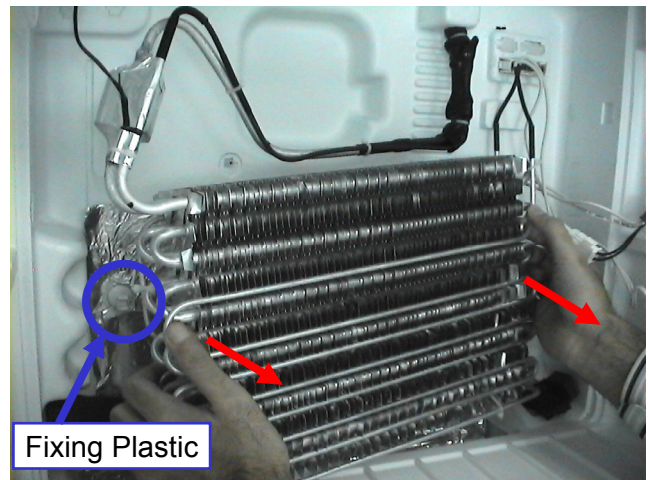
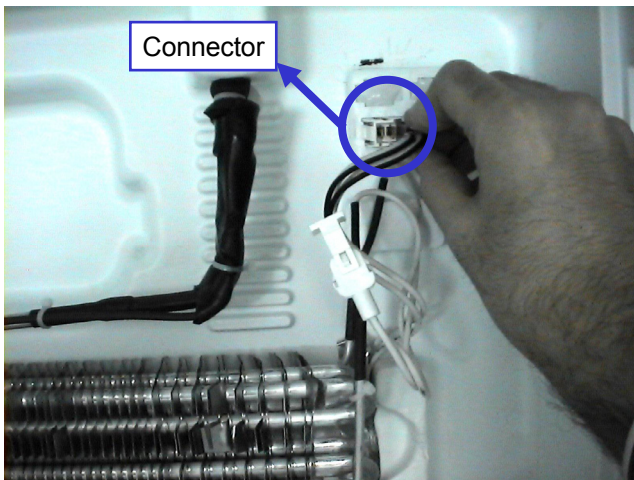
<b>VESTEL</b> WHITE GOODS	<b>NO-FROST</b>	<b>CUSTOMER          SUPPORT</b>
	<b>FREEZER COMPARTMENT</b>	

### Replacement of Thermal Fuse Assy



Disconnect to thermal fuse connector. (black connector)  
 Remove the thermal fuse by pulling which mounted on the right side of the evaporator.  
 Take out the thermal fuse.

### Replacement of Evaporator



Disconnect to evaporator connector. (blue connector)  
 Remove the evaporator by pulling forward in a horizontal direction.  
 Do not push it up or down. You may broke the fixing plastics.

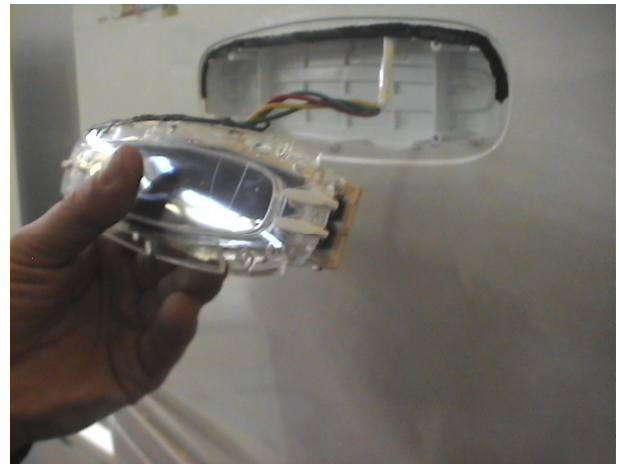
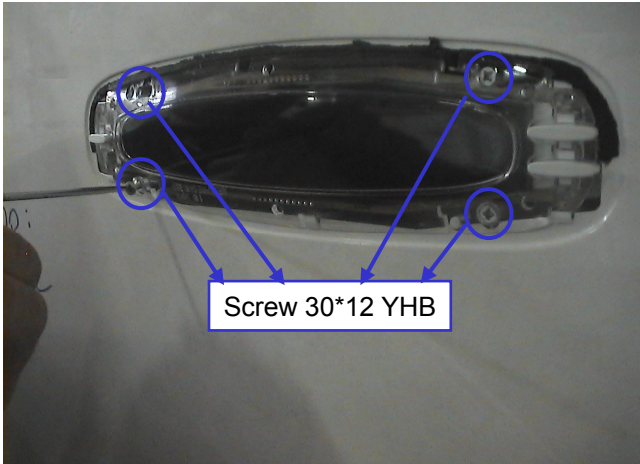
<b>VESTEL</b> WHITE GOODS	<b>NO-FROST</b>	<b>CUSTOMER          SUPPORT</b>
	<b>DISPLAY PANEL</b>	

### Replacement of Display Panel

By using a screwdriver gently move the catchers of panel cover. Then remove it with your hand by pulling forward.



Unscrew the four screws which are fixing the display panel and remove it.



Remove the cables from the connector and remove the display panel.



<b>VESTEL</b> WHITE GOODS	<b>NO-FROST</b>	<b>CUSTOMER SUPPORT</b>
	<b>MAIN BOARD</b>	

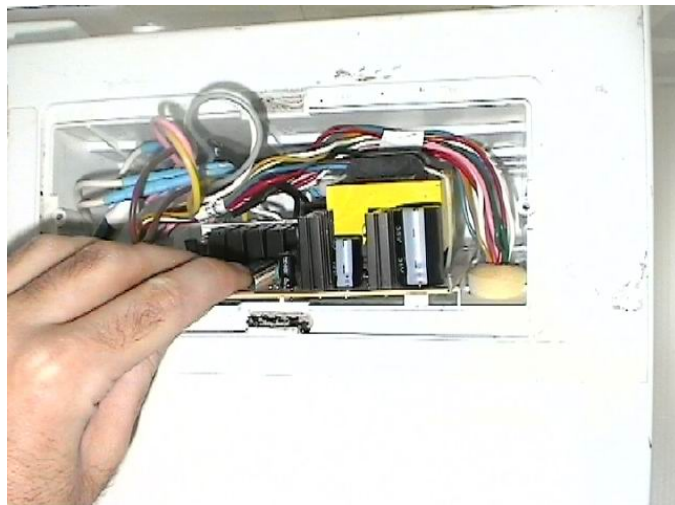
### Replacement of Main Board

Unscrew the two screws which are fixing the main board cover and remove it.  
(KA 40\*14 WN 1411(INOX) EJOT)



Pull the main board slightly forward. Then disconnect all the connectors and then remove it.

**Note That :** When remove out the PCB be careful not to damage the PCB and other parts.



<b>VESTEL</b> WHITE GOODS	<b>NO-FROST</b>	<b>CUSTOMER SUPPORT</b>
	<b>REFRIGERATOR COMPARTMENT</b>	

### Replacement of Refrigerator Lamp

Remove the refrigerator lamp cover using a screwdriver and by pulling forward.



Loosen the lamp and replace it.



<b>VESTEL</b> WHITE GOODS	<b>NO-FROST</b>	<b>CUSTOMER SUPPORT</b>
	<b>REFRIGERATOR COMPARTMENT</b>	

### Replacement of Refrigerator Multi-Flow Assy. :

Firstly, remove out the chiller cover and chiller shelf then unscrew the four screws which are fixing the chiller shelf partition and remove it.  
**(KA 40\*14 WN 1411(INOX) EJOT)**



Unscrew the five screws which are fixing the refrigerator multiflow cover.  
**(KA 40\*14 WN 1411(INOX) EJOT)**



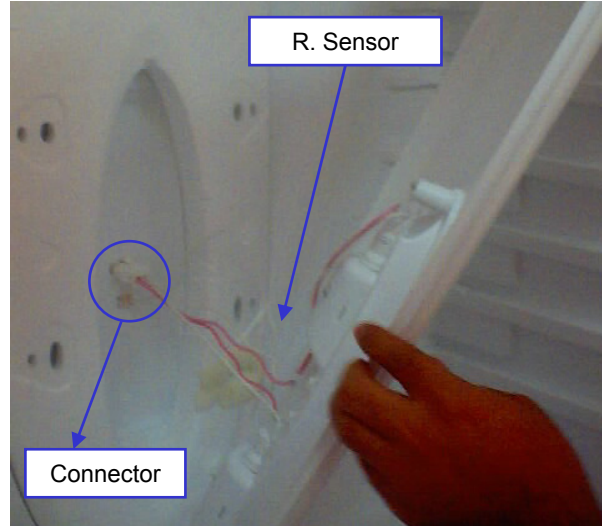
After unscrew the fixing screws detach the multi-flow cover by pulling from bottom to forward.



<b>VESTEL</b> WHITE GOODS	<b>NO-FROST</b>	<b>CUSTOMER          SUPPORT</b>
	<b>REFRIGERATOR COMPARTMENT</b>	

**Replacement of Refrigerator Multi-Flow Assy. :**

Disconnect the lamp socket and refrigerator sensor connectors then remove multiflow cover.

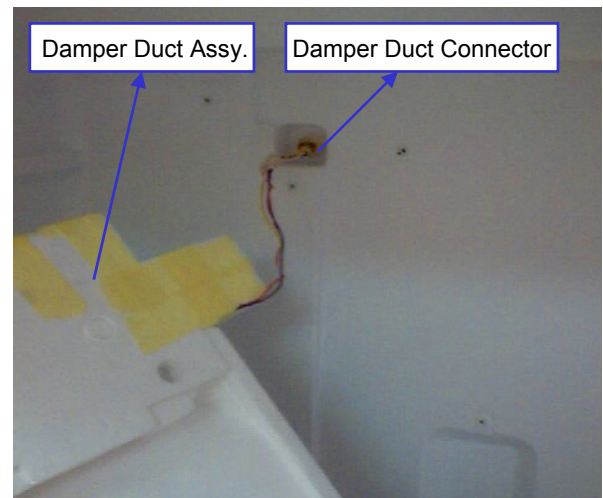


Pull forward multi-flow insulation assy. From bottom, then separate upper side from housing (Damper duct) and take out the multi-flow insulation

Note that: When dismantle the multi-flow insulation be careful not to damage sponge which keeps the R. sensor against stroke.



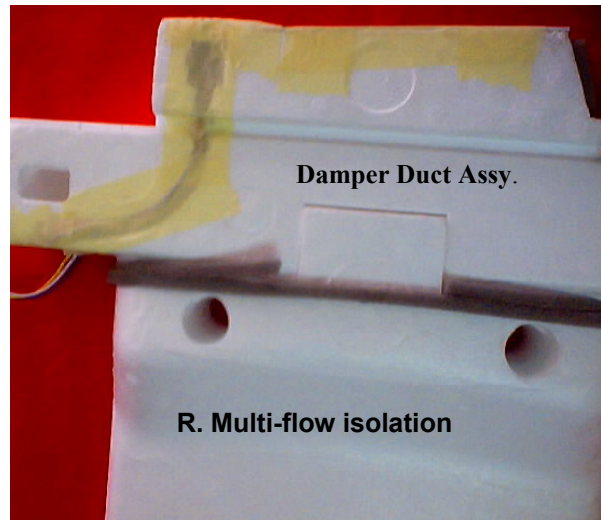
Disconnect the damper duct connector from housing.



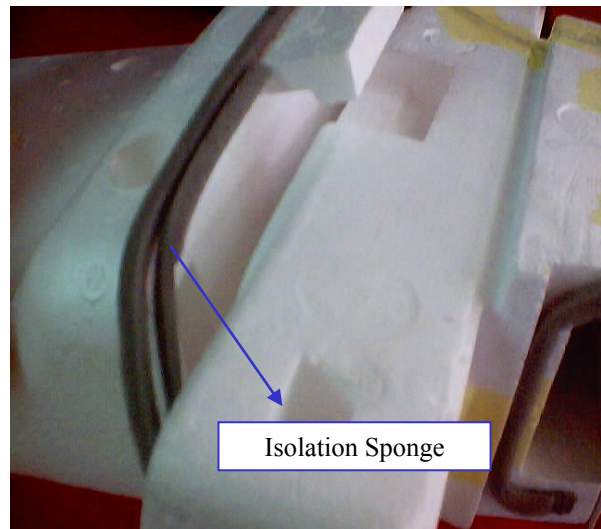
<b>VESTEL</b> <b>WHITE GOODS</b>	<b>NO-FROST</b>	<b>CUSTOMER  SUPPORT</b>
	<b>REFRIGERATOR COMPARTMENT</b>	

**Replacement of Damper Duct Assy. :**

When detaching the damper duct assy. From the R. Multi-flow isolation be careful that not to damage isolation sponge which is located between damper duct and R. Multi-flow isolation.



Bend the damper duct slightly and Separate the damper duct assy. From R. Multi-Flow isolation. Take care not to damage isolation sponge.



<b>VESTEL</b> WHITE GOODS	<b>NO-FROST</b>	<b>CUSTOMER SUPPORT</b>
	<b>REPLACEMENT OF DOOR SWITCH</b>	

Insert a screwdriver into the gap and gently pull the door switch.



Disconnect the terminals. And remove the door switch.

